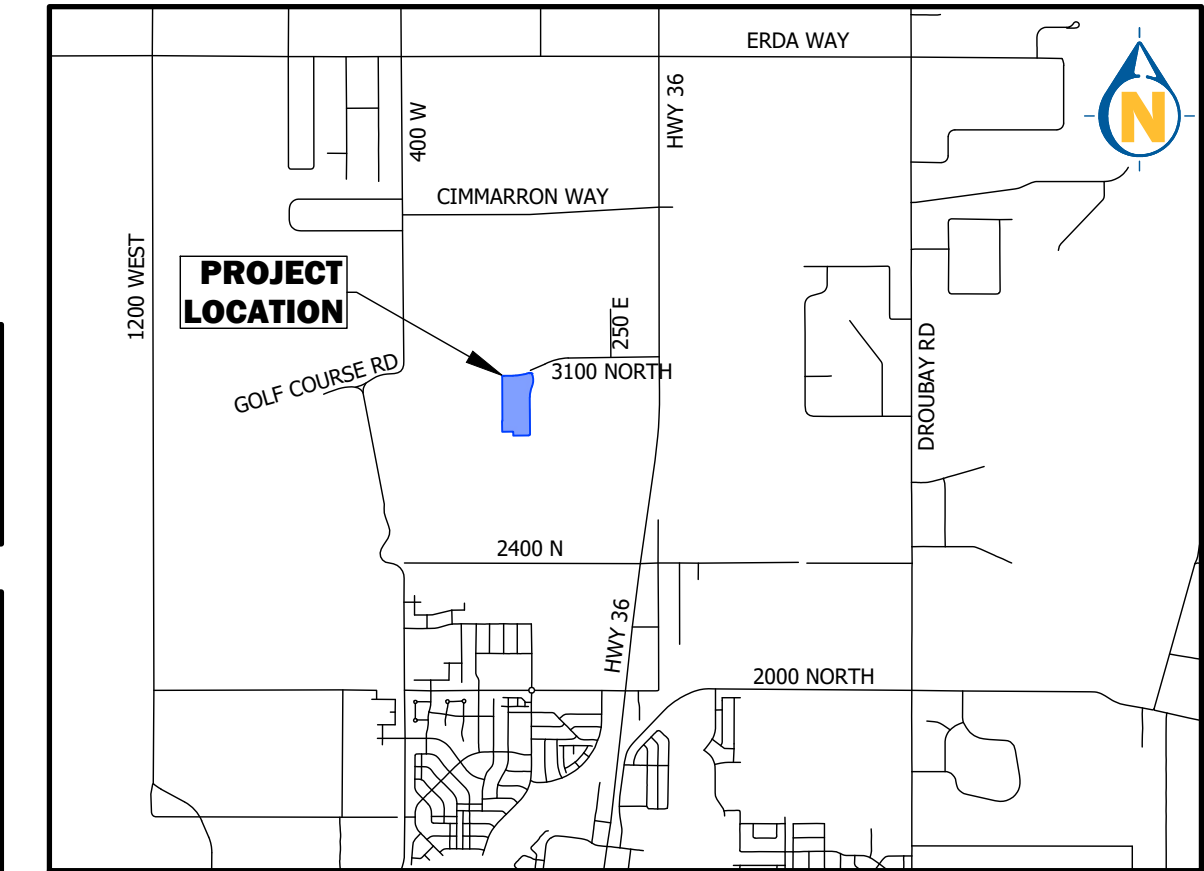


COMPASS POINT TOWNHOMES

100 W 3100 NORTH
 PARCEL 02-141-0-005
 LOCATED IN THE SW 1/4 OF SECTION 4 , T.3S., R.4W., S.L.B.&M.
 TOOELE CITY, TOOELE COUNTY, UTAH
 CURRENT ZONING: MDR
 LAND USE: RSD

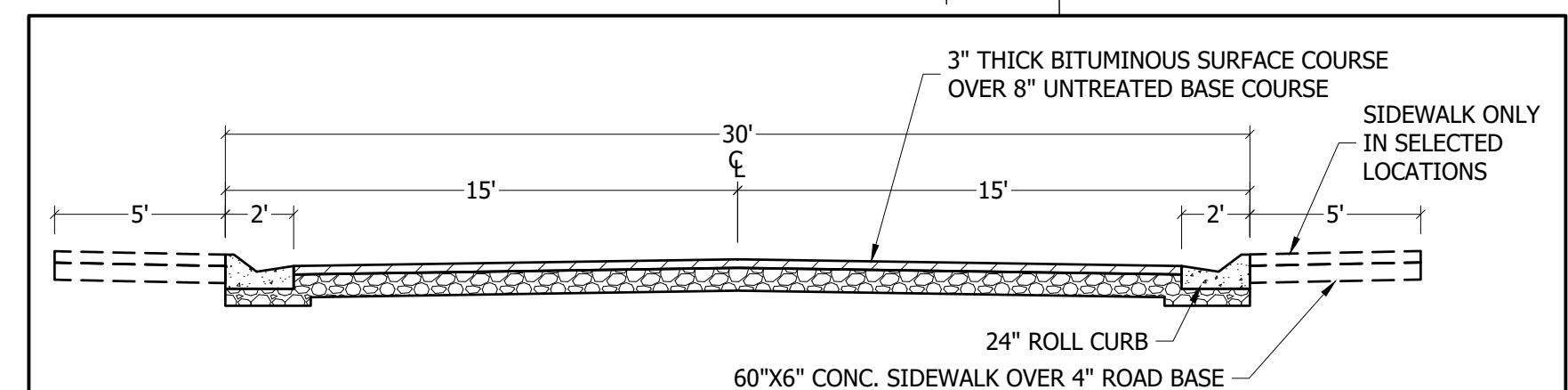
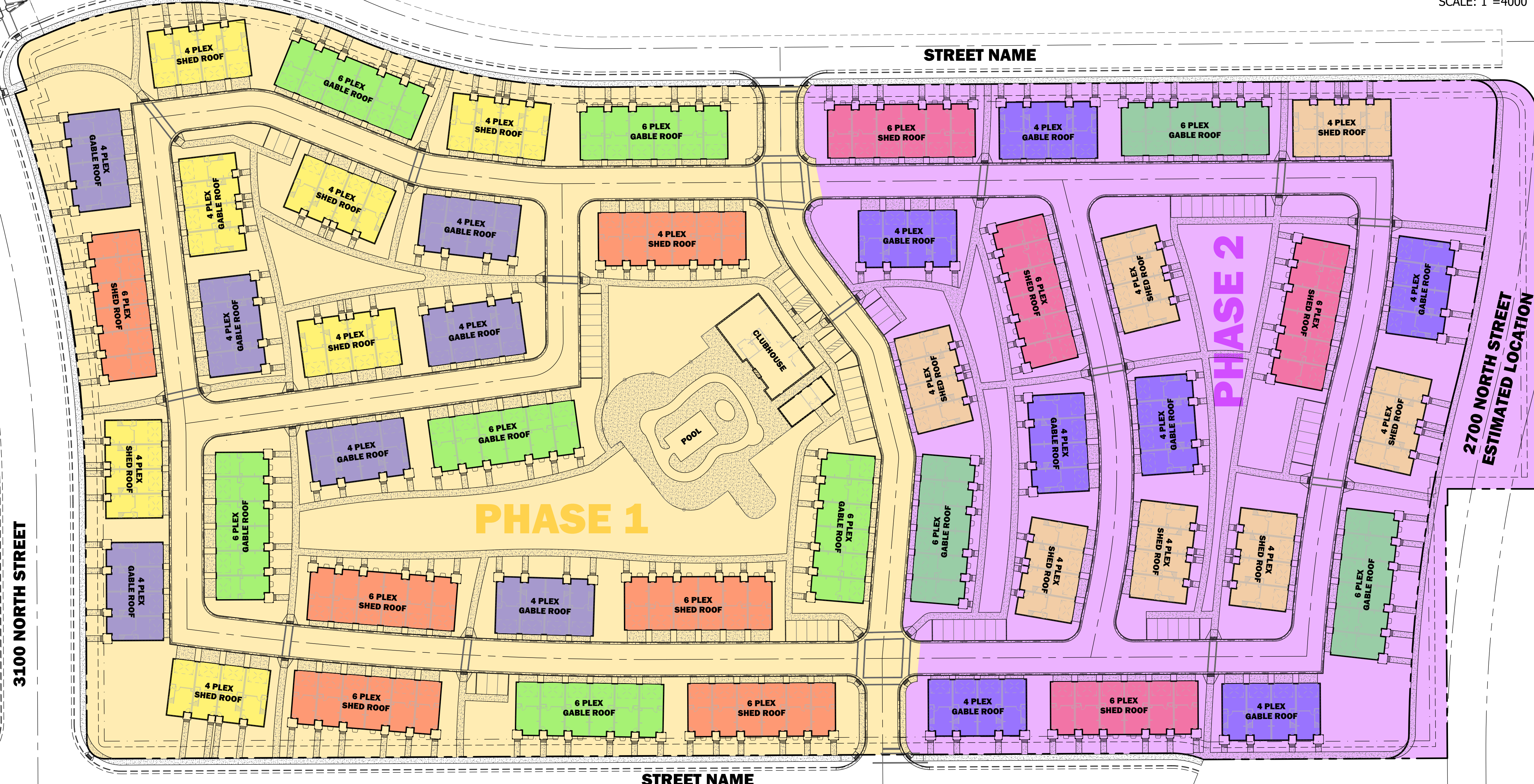
VICINITY MAP



PHASING TABLE				
	AREA (Acres)	UNITS	DENSITY (units/acre)	GUEST PARKING
PHASE 1	9.56	128.00	13.39	32
PHASE 2	7.10	98.00	13.80	30
TOTAL	16.66	226.00	13.57	62

UNIT MIX	
4 PLEX - GABLE ROOF - 14 EACH = 56 UNITS	
4 PLEX - SHED ROOF - 14 EACH = 56 UNITS	
6 PLEX - GABLE ROOF - 9 EACH = 54 UNITS	
6 PLEX - SHED ROOF - 10 EACH = 60 UNITS	
TOTAL = 226 UNITS	

SCALE: 1"=4000'



PRIVATE ROADWAY X-SECTION

H:\1000\1043029\1043029.dwg 2025-08-19 2:19:00 PM LELAND MARTINEAU

Know what's below. Call 811 before you dig.

BLUE STAKES OF UTAH
 UTILITY NOTIFICATION CENTER, INC.
 www.bluestakes.org
 1-800-662-4111

1470 South 600 West
 Woods Cross, UT 84010
 Phone 801.298.2236
 www.Entellus.com

DEVELOPER
PERRY COMMERCIAL
 Contact: MATT SWAIN
 17 E. Winchester St.
 Murray, UT 84107
 Phone: 801-554-6905
 mswain@perrycommercial.net

PRELIMINARY NOT FOR CONSTRUCTION

COMPASS POINT TOWN HOMES
 100 W 3100 N PARCEL 02-141-0-005
 LOCATED IN THE SW 1/4 OF SECTION 4 , T.3S., R.4W., S.L.B.&M.
 TOOELE CITY, TOOELE COUNTY, UTAH

REVISIONS

DRAWN: AEM 2025-08-19
 APPROVED: LKM 2025-08-19
 PROJECT #: 1043029
 PRELIM 1043029.dwg

C400
 PRELIMINARY PLAN